

SOLID / LIQUID EXTRACTION

Thanks to its extensive range of extractors, **NATURE & TECHNOLOGIES** delivers complete bespoke, turnkey units tailored to all types of raw material.

Application markets



Perfumery



Cosmetics



Flavourings



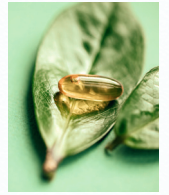
Functional ingredients



Biocontrol

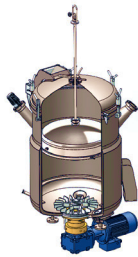


Nutraceutical



Pharmaceutical

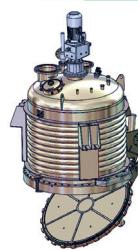
Our "all-in-one" solutions: Extraction, Filtration, Desolvation



FLOATING FILTER EXTRACTOR EFF

Designed for extracting powders and resins

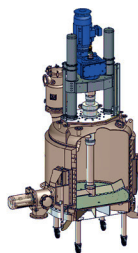
- Turbo-agitator at the bottom of the tank
- Filtration from above
- Desolvation by steam stripping
- Capacity: from 250L to 2,000L



FILTERING BOTTOM EXTRACTOR EF1

Designed for extracting non-powdery plants and leaves

- Automated loading
- Unloading via swivel bottom
- Agitation defined based on the application
- Can be used in percolation mode
- Desolvation by stripping or drying
- Capacity: from 250L to 5,000L



FILTERING BOTTOM EXTRACTOR EF2

Designed for extracting the most demanding powders and materials

- Automated loading
- Unloading via lateral valve
- High-powered powder agitation
- Desolvation by stripping or drying
- Capacity: from 250L to 5,000L

STATIC EXTRACTOR

Designed for extracting fragrant flowers: rose, jasmine, mimosa, etc.

VEGETAL EXTRACTION

With its extraction solutions designed to optimize performance, **NATURE & TECHNOLOGIES** works hand-in-hand with you to develop your industrial projects.



Complete, turnkey extraction solutions integrating all nearby equipment


- Conveyance of raw and spent materials
- Solvent management (storage, monitoring, regeneration)
- Structure, piping, cabling
- Assembly
- Commissioning and training
- ATEX-compliant



High-performing evaporation/ concentration technologies tailored to each material

- Single or double-effect falling film
- Vacuum concentrator
- Scraped-surface evaporator

Automation

 Functional programming to unit 4.0 to improve performance and operability.

Supported by **WiNatLab™**

- Drawing up extraction protocols
- Application, regulatory, market expertise
- 80L pilot (extraction and evaporation)

Did you know?

- We also deliver concrete and absolute units.

A customer service and a dedicated team on hand for you:

- Maintenance contract
- Revamping expertise
- Process support



< VISIT US

NATURE & TECHNOLOGIES
225, Route de Cannes - 06130 Grasse Cedex, France
nature-technologies@groupeadf.com 

GROUPE ADF head office
La Bastide Blanche - Bat G - 13746 Vitrolles Cedex, France
Tel. +33(0)4 42 77 48 50

